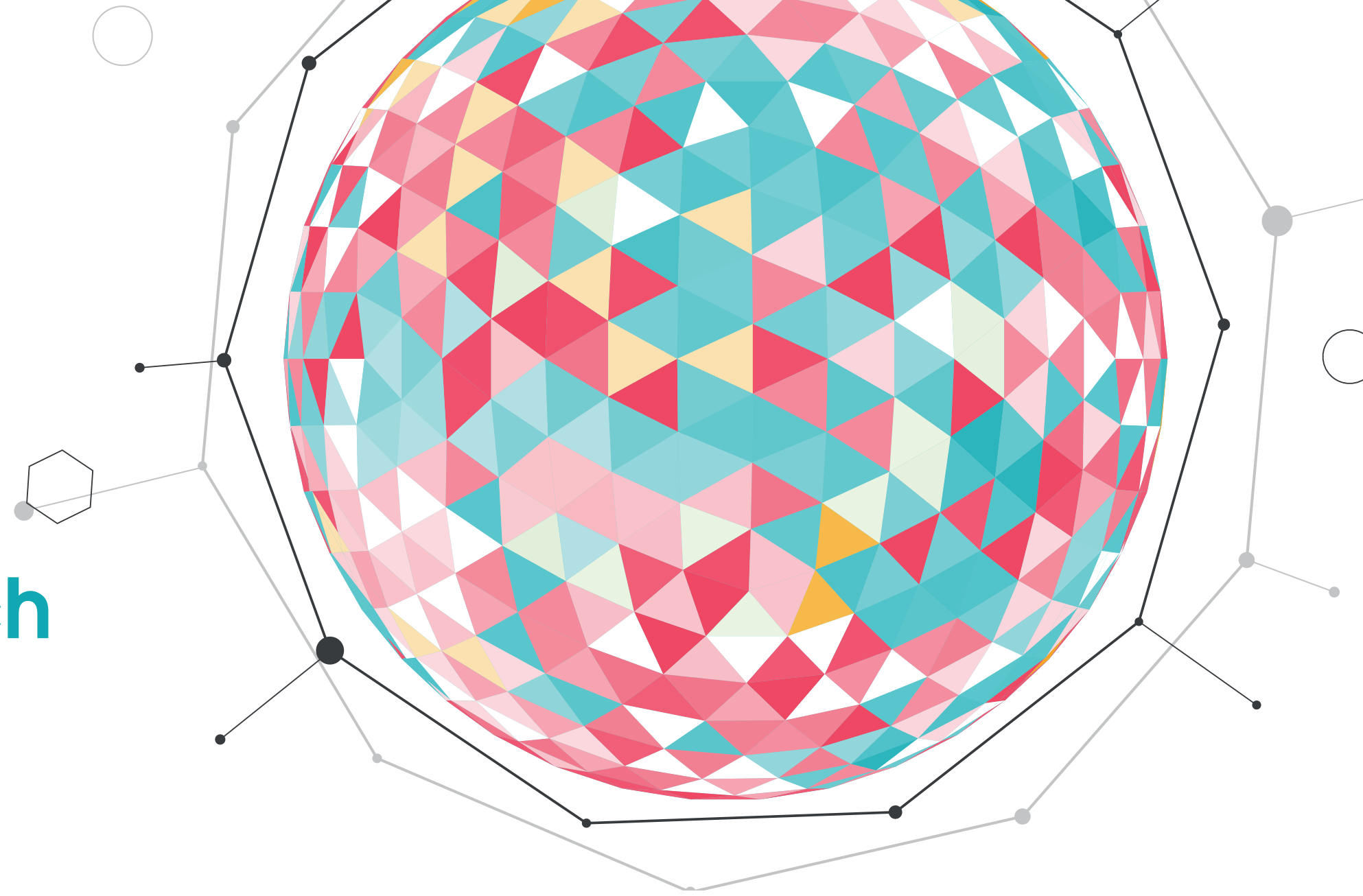


The 2nd International Conference of the Experiment Lab for Public Management Research (EXPMR) Leading Experimental Research in the Asia-Pacific Region

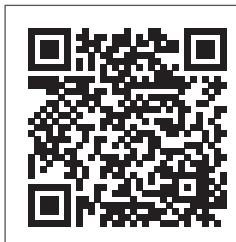
Date: December 3rd - 4th, 2020 (KST)
Online Participation Only

The Experiment Lab for Public Management Research (EXPMR) of the KDI School of Public Policy and Management invites you to our second international conference under the title of "Leading Experimental Research in the Asia-Pacific Region," December 3rd - 4th, 2020. The virtual conference will focus on the topics of behavioral and experimental research in public policy and administration. Honorable professors Wook Sohn (KDI School), Anthony Bertelli (the Pennsylvania State University), James Perry (Indiana University), Richard Walker (City University of Hong Kong), and MJ Moon (Yonsei University) will lead two plenary sessions. Eminent scholars worldwide will lead six panels about behavioral public policy and administration in the comparative contexts and discuss leading experimental research conducted in the Asia-Pacific region.



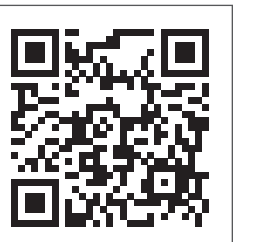
Youtube Live Streaming

- Online live stream will be conducted on the official Youtube channel of the KDI School of Public Policy and Management
<https://www.youtube.com/c/KDISchoolofPublicPolicyandManagement>



Pre-registration

- Please register until November 26th (Thursday) through the link. Registration link: <https://forms.gle/88VsJH2Sj2yFoi6F7>
- To prevent the spread of COVID-19, only online participation is allowed.
- The confirmation of your registration and detailed information for how to join the conference will be informed before conference.
- For more information, please contact KDI School Research Planning Division. (odric.rpd@gmail.com, 044-550-1214)



Program

DAY 1

Korea Standard Time (US Eastern Standard Time)	Category	Contents
December 3, 08:00-08:10 (December 2, 18:00-18:10)	Opening Session	Cheol Liu, KDI School of Public Policy and Management
Plenary 1		Behavioral Public Administration and the Comparative Context
December 3, 08:10-08:50 (December 2, 18:10-18:50)	Plenary 1-1	What is Behavioral Public Administration Good For? - Anthony M. Bertelli, The Pennsylvania State University
	Plenary 1-2	Advancing Global Public Administration Knowledge: Comparative Experimental Research on Accountability and Public Service Delivery - James L. Perry, Indiana University
Panel 1		Moderator: Cheol Liu
December 3, 09:05-10:35 (December 2, 19:05-20:35)	Presentation 1-1	A Procedural Framing Experiment of Administrative Rulemaking - William G. Resh, University of Southern California
	Presentation 1-2	Mayoral Preferences for Performance Assessment: Credit Claiming or Monitoring - Claudia N. Avellaneda, Indiana University
	Presentation 1-3	Air Pollution in Northeast Asia: Distinctions of Korean Public Opinion Regarding Korean-Chinese Coordination - Matthew A. Shapiro, Illinois Institute of Technology
	Discussion 1	Salvador Espinosa, San Diego State University
Panel 2		Moderator: Cheol Liu
December 3, 10:50-12:05 (December 2, 20:50-22:05)	Presentation 2-1	Collective Action for Sanitation: Evidence from Experimental Games in Rural India - Emily L. Pakhtigian, The Pennsylvania State University
	Presentation 2-2	A Matter of Perspective: Differential Evaluations of AI Tools Between Managers and Staff in an Experimental Simulation - Matthew M. Young, Syracuse University
	Presentation 2-3	Evaluation of Volunteered Geographic Information Systems for Prevention of Invasive Alien Species - Helen K. Liu, National Taiwan University
	Discussion 2	Christopher Witko, The Pennsylvania State University
Panel 3		Moderator: Cheol Liu
December 3, 13:00-14:30 (December 2, 23:00-00:30)	Presentation 3-1	My Workgroup or My Community? The Influence of Group Interests, Public Service Motivation, and Identities on Whistleblowing Intention - Jeannette Taylor, The University of Western Australia
	Presentation 3-2	Do Privacy Protections, Gain versus Loss Focus, and Prosocial versus Individual Framing Affect the Public Acceptance of a Contact Tracing App for Covid-19? Two Survey Experiments on Hong Kong Population Samples - Nick Petrovsky, City University of Hong Kong
	Presentation 3-3	Emergence & Development of Behavioral Public Policy Units in Government: The Case of Turkey - Mete Yildiz, Hacettepe University
	Discussion 3	Tima T. Moldogaziev, The Pennsylvania State University

DAY 2

Korea Standard Time (US Eastern Standard Time)	Category	Contents
Panel 4		Moderator: Cheol Liu
December 4, 08:00-09:15 (December 3, 18:00-19:15)	Presentation 4-1	Implementers' Job Discretion Preferences under Pay-for-Performance: Testing the Role of Type and Framing of Incentives - Johabed G. Olvera, The Pennsylvania State University
	Presentation 4-2	Mayoral Preferences for Delegation in Collaborative Arrangements: Issue Saliency and Policy Specificity - Ricardo Bello-Gomez, Texas Tech University
	Presentation 4-3	Artificial Intelligence and Automation Bias in the Public Sector - Justin Bullock, Texas A&M University
	Discussion 4	Kenneth A. Kriz, University of Illinois at Springfield
Plenary 2		Behavioral Public Administration in the Asia-Pacific Region
December 4, 09:30-10:10 (December 3, 19:30-20:10)	Plenary 2-1	Experimental Research Methodology in the Asia-Pacific: A Review and Research Agenda - Richard M. Walker, City University of Hong Kong
	Plenary 2-2	What Makes Administrative and Hierarchical Procedures More Burdensome? Effects of Degree of Procedures, Outcome Favorability, and Confucian Values on Red Tape Perception - MJ Moon, Yonsei University
Panel 5		Moderator: Cheol Liu
December 4, 10:25-11:40 (December 3, 20:25-21:40)	Presentation 5-1	Applying Behavioral Insights to Public Policies in the Asia-Pacific Region - Maithreyi Gopalan, The Pennsylvania State University
	Presentation 5-2	Intersectional Minorities and Citizens' Public Hiring Preference: By Whom They Want to Be Represented - MJ Lee, Yonsei University
	Presentation 5-3	Too competitive a civil service examination may screen out applicants with a higher PSM - Chung-An Chen, Nanyang Technological University
	Discussion 5	Jekyung Lee, HNU-ASU Joint International Tourism College
Panel 6		Moderator: Cheol Liu
December 4, 12:40-13:40 (December 3, 22:40-23:40)	Presentation 6-1	Citizens' Perception on Nudge and Some Pro-environmental Nudge Experiments in Korea - Jeongseok Lee, Korea Environment Institute
	Presentation 6-2	Bureaucratic Responsiveness under Dynamic Political Settings: Experimental Evidence from Local Governments - Don S Lee, University of Nottingham
	Discussion 6	Tima T. Moldogaziev, The Pennsylvania State University